



more colour, better choices

Premium Continuous Ink Supply Systems.

Instruction Manual

For Canon Printers
IP4200, IP5200
MP800 & MP830
MP500, MP530



Installation Manual

IP4200, IP5200, MP800, MP830 – 100ml Series

Version 6-2009

Installation Manual	3
1) Printer pre-check.	5
2) Preparing your new CISS for installation.....	7
3) Attaching Cartridge Chips – un chipped CISS unit only.....	8
4) Preparing your ink reservoirs	10
5) Inserting the silicone nozzle seals.	11
6) Inserting the cartridges	12
7) Tube set up (IP Series Only)	13
8) Tube set up (MP800 and MP830 only)	15
9) Tube set up (MP500 ONLY).....	17
10) Tube set up (MP530 only).....	19
11) Final touches (all models)	22
12) Refilling your CISS	23
13) Priming	24
14) Cartridge chip disable - Low ink.	26
15) Trouble Shooting.....	28
17) Canon Error Messages.....	31
18) Warranty.....	34
19) Warning	34

Instruction Manual

Canon Printers
IP4200, IP5200, MP800, MP830 – 100ml Series

Congratulations on your purchase of a rihaC™ Continuous Ink Supply System (CISS). Before using the system please read this manual carefully. It will help you install the system correctly and ensure trouble free printing.

Great care is taken to prepare your CISS for trouble free installation. Your CISS has been primed (Australian customers only) and should be ready for immediate installation into your printer.

Please be aware that some of the pictures in this manual may not represent the printer you are working with. Throughout the installation process please feel free to contact us or refer to our website, www.rihac.com.au for any troubleshooting and frequently asked questions. If you are installing this unit into an MP500 or MP530 you will require an additional instruction sheet with specific details for those printers

1) Printer pre-check.

Before opening your CISS, please perform the following print tests to ensure your printer heads are in good condition.

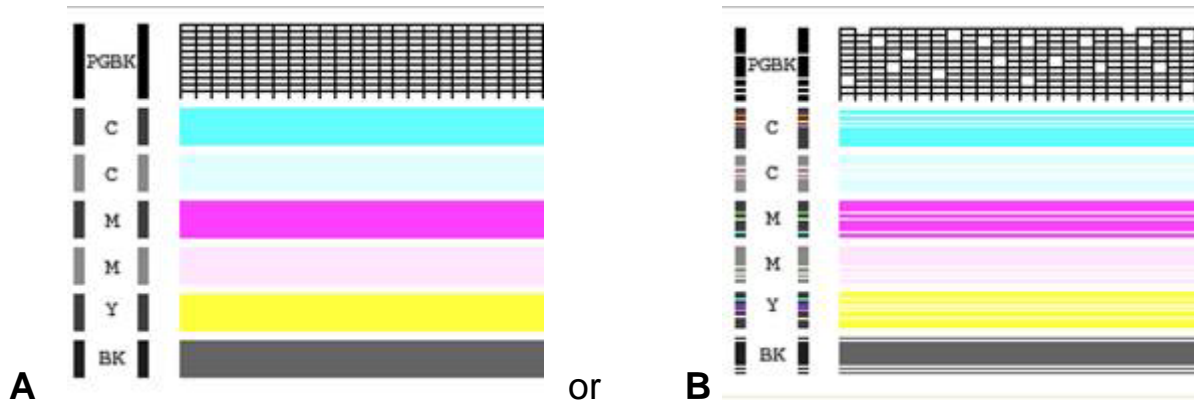
- a) Perform a printer head clean.

For Windows XP users, this is done by accessing your printer properties through the start menu on the bottom left of your screen and choosing the control panel. **Select the printers and faxes option** and locate your printer. Right click your mouse button on the printer icon and choose **Properties** from the menu, then select the **Maintenance** tab. Click on the cleaning icon which will be similar to the one pictured below. Choose to perform a head clean on **All Colours** and then execute the clean.



- b) After performing a head clean you must then perform **Print Check Pattern**. The computer will automatically ask you this, however if it does not, simply choose to perform a 'Nozzle Check' on the printer maintenance screen.

Your printer will print either of the following;



If your printer has produced a perfect result (A), please attach a copy of the nozzle check to your purchase receipt as this will validate your warranty. You can now start to install your CISS.

If your printer has printed with missing lines or uneven colouring (B) please repeat steps 1.a and b. If your second print is similar to the first, you more then likely have damaged printer heads and you will need them replaced before successfully installing a CISS.

2) Preparing your new CISS for installation

Please ensure the following are present with your CISS.

- (1) Air filters x5
- (2) Silicone nozzle seal x 5
- (3) Cable ties (spare)
- (4) Double sided tape tabs (spare)
- (5) Syringe and filling needle
- (6) Spare elbow joints and connections
- (7) Single spacer clips (for use on MP500/530 only)



- b) Remove your CISS from the box and check there are no leakages or cracks and that the silicone tubing is not damaged.
- c) Inspect the silicone tubing for air pockets.



If you have an excessive amount (5cm or more) of air in the tubing, you will need to prime the unit. Please refer to page 24 of this installation manual.

This will prevent any problems with your print quality further down the track.

- d) Close the tube clamp located on the side of the CISS by rolling the roller **down**. This will squeeze the silicone tubing which will prevent ink flow.



Engage the tube clamp by rolling the roller down

If you do not close this valve, ink will flow back into the reservoir from your cartridges.

3) Attaching Cartridge Chips – un chipped CISS unit only

If you have purchased a pre chipped system please proceed to section 4) on page 10

Your original cartridge chips must be transferred onto the CISS cartridges. Please follow the following steps carefully

- a) Turn on your printer and open the cover. The cartridge holder will move to the cartridge change position. Remove power cable from the back of your printer. Remove the cartridges from the printer.



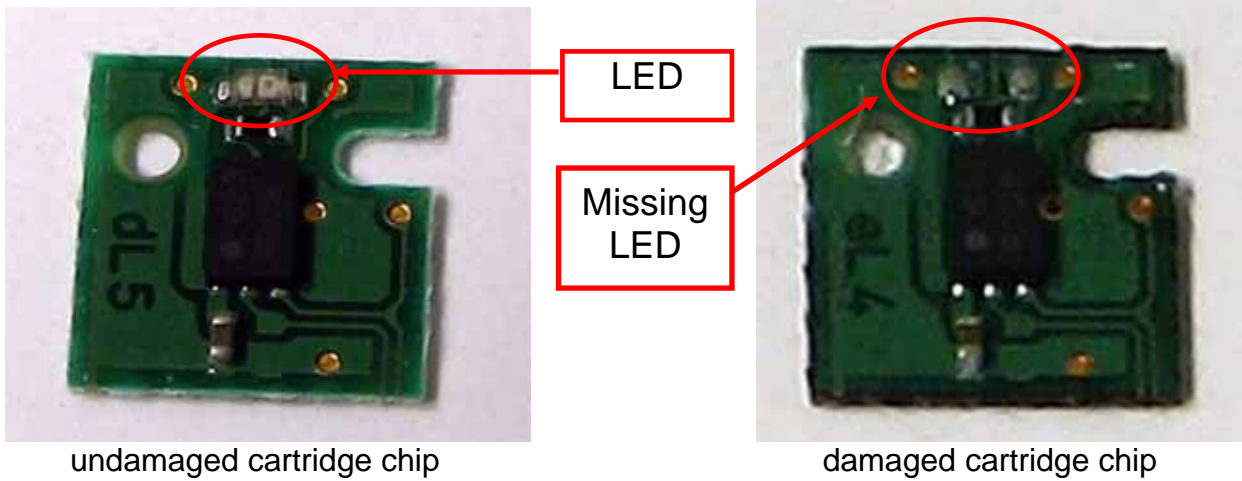
- b) Using a Stanley knife or sharp blade remove the two plastic lugs which hold the chip in place. **The chips are colour specific so ensure you do not mix them up as they will not work if they are attached incorrectly**



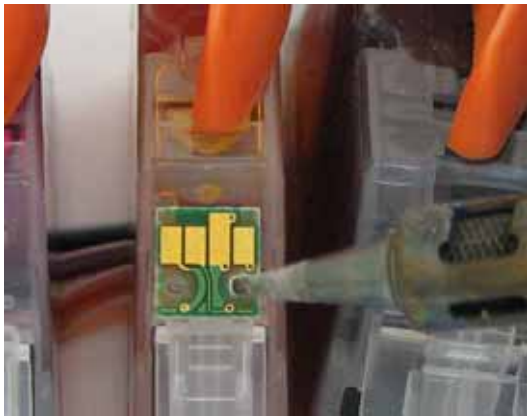
- c) **Gently** lift the chip from the cartridge. **Never pry off the chip** particularly from the top of the chip as you may damage the sensitive electronics on the rear of the chip.



- d) Examine the rear of the chip to ensure the LED has not been damaged or cut off.



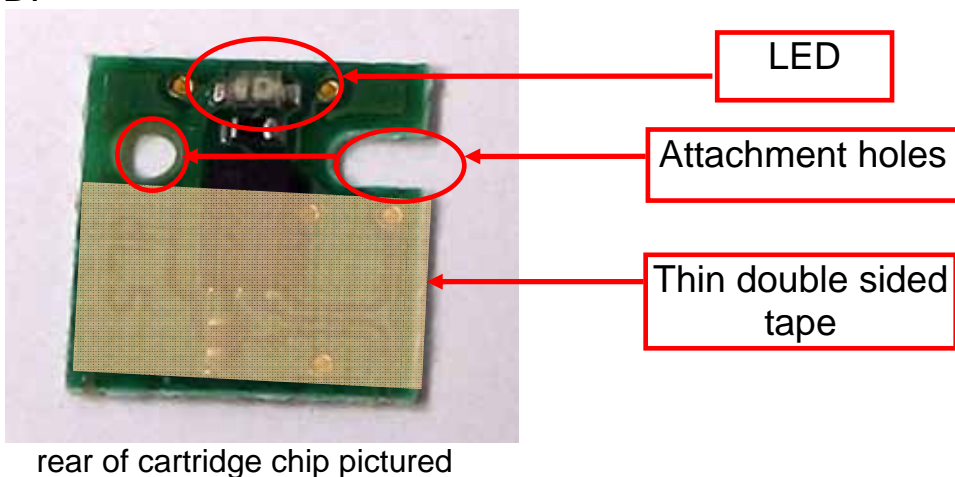
- e) Place the chip onto the corresponding coloured CISS cartridge, ensuring that the small plastic lugs are inserting into the chip holes. Use a soldering iron gently melt the plastic lugs to hold the chip in place.



- f) Repeat steps b) & e) for each of the cartridges on your CISS

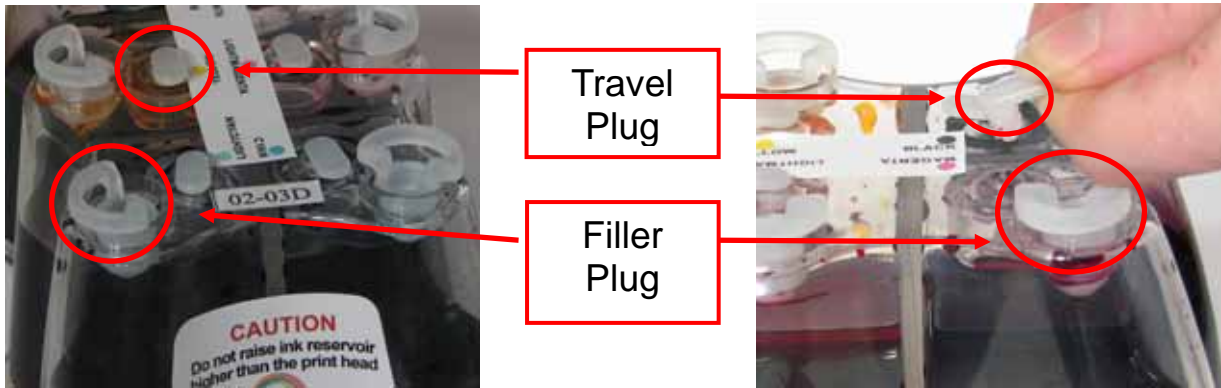
Alternatively you can fit the cartridge chips using thin double sided tape although the preferred method is with a soldering iron.

If attaching the chip with double sided tape, please cut the tape and attach it to the rear of the chip as pictured below. **DO NOT COVER ATTACHMENT HOLES OR LED.**

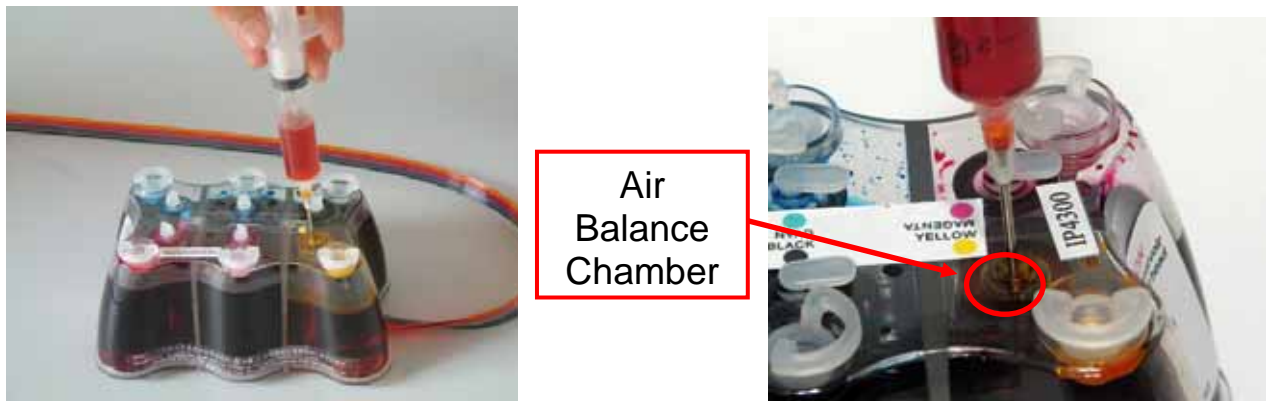


4) Preparing your ink reservoirs

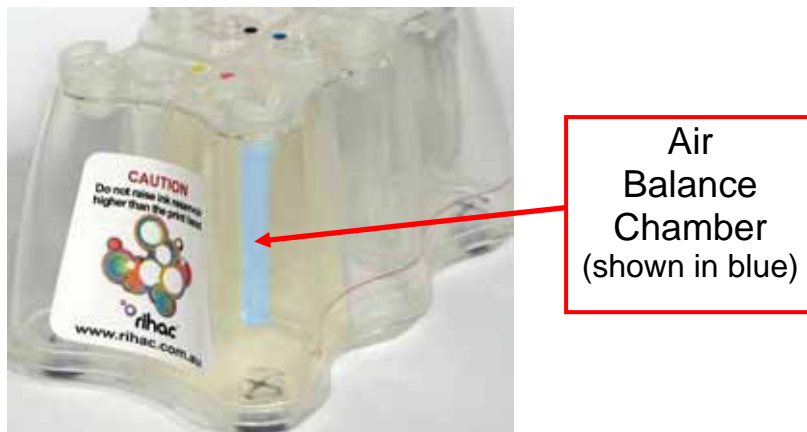
- a) Carefully remove the small travel plugs on the CISS, **leaving the filler plug in place.**



- b) Using the syringe, remove any excess ink from the inner air balance chamber. The chamber does not have to be completely empty for the CISS to function correctly. Removing excess ink simply helps reduce the air pressure drawing back from the cartridges and can assist in preventing air to develop in the ink feeder tubes. The excess ink can be discarded or replaced into the reservoir via the filler plug. Please refer to refilling instruction page 22 .



Never have the filler plug removed at the same time as the travel plug. The air balance chamber has a hole in the base linking it to the main ink reservoir. Having both plugs removed at the same time will re-fill the air balance chamber with ink.



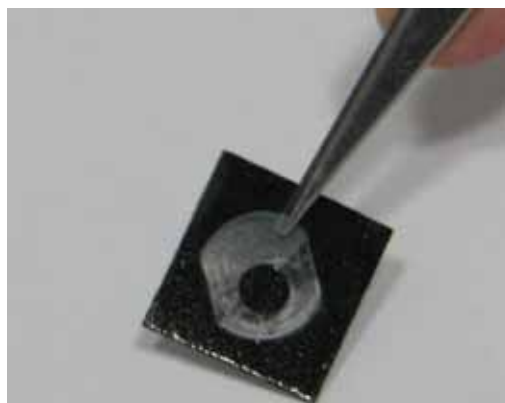
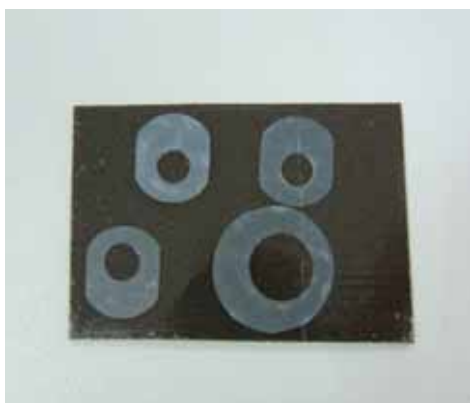
THE FOLLOWING STEPS ARE VERY IMPORTANT FOR ALL CANON PRINTERS.

5) Inserting the silicone nozzle seals.

- a) Remove the printer head from your printer by lifting the print head lock arm. The print head will then lift out



- b) Remove the 5 silicone seals from your kit. During manufacture 2 seals may stick together giving the appearance of a single seal.
- c) Ensure each seal is clean by placing each seal onto the small pieces of double sided tape provided. Please ensure both sides of the seal are cleaned. Use the tweezers provided to remove each seal from the tape ensuring no dust, dirt or oils are passed onto it from your hands.



- d) Carefully place each silicone nozzle seal into position around each of the printer heads as shown.



- e) Incorrectly placed silicone seals can cause poor printing quality. Please ensure that the silicone seals do not move from position when inserting the cartridges. **These seals must not cover the silver printer head.**
- f) Reinsert the print head (with silicone seals now fitted) back into the printer

6) Inserting the cartridges

- a) Remove the orange cartridge cover from each of your new cartridges. This is done by slowly moving the clip in an anticlockwise direction. Beware that during transit ink may build up in this cap and will release when the cover is removed, so have a tissue or similar handy to absorb the excess ink.

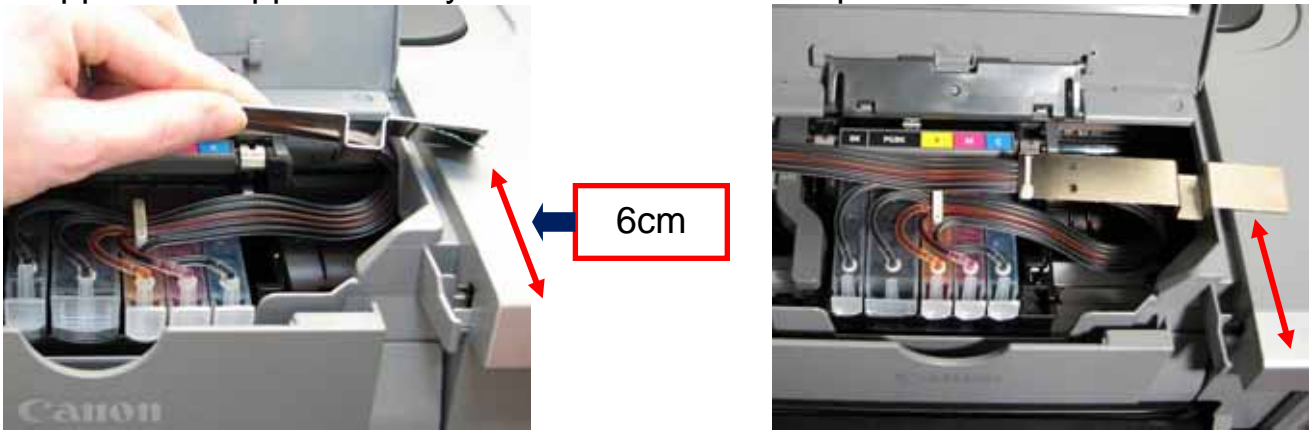


- b) ***If installing you CISS onto an MP530 printer please proceed to section 10) on page 19 of this manual.***
- c) For all other printers, insert the new cartridges into your printer as a group. Please ensure that the cartridges are placed in the correct coloured cartridge holder. Gently push down on the cartridges to click them into place

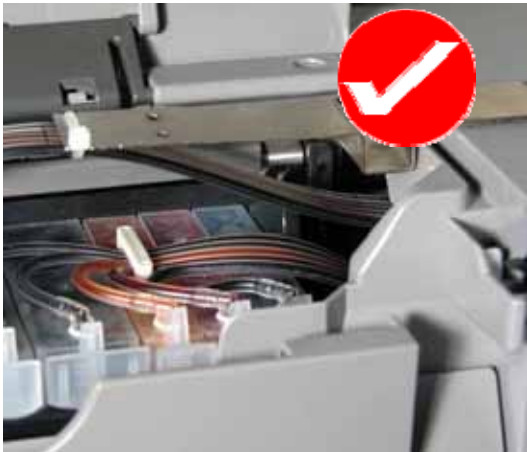


7) Tube set up (IP Series Only)

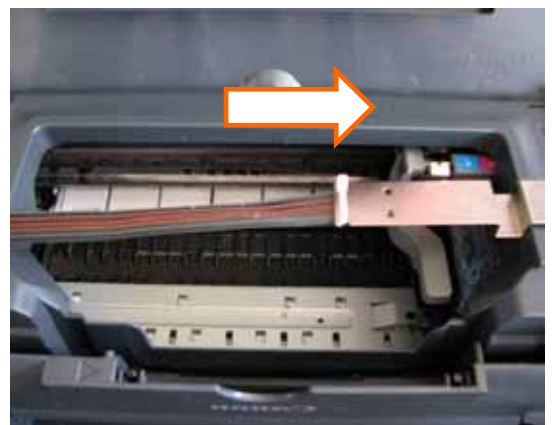
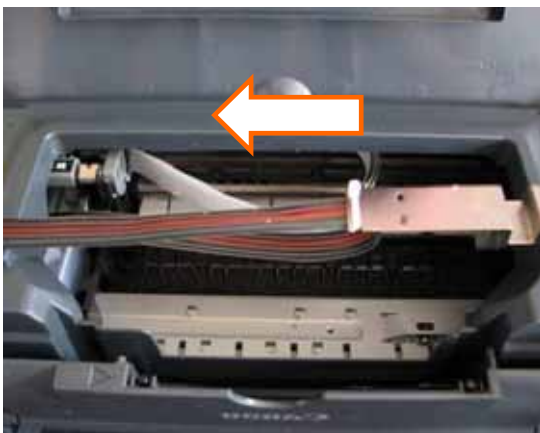
- a) Remove the backing to the double sided tape and attach the metal tube support arm approximately 6cm from the front as pictured below.



Please be careful not to twist the tubing before connecting it to the printer.



- b) Adjustments to the tube length may be required. To check this, move the cartridge holder left and right to each end of the printer. It should reach both ends with ease. Check that the tubing is neither too long nor too short. The tubing must not interfere with the printer data wire nor should it fall down into the paper support or cause any interference to the head movement.



- c) If required, adjust the tube length by gently pulling the silicone tubing in the direction required. ***DON'T HAVE THE TUBING FITTED TOO TIGHTLY.***

- d) Peel off the backing tape to the tube connection and place it as pictured below. Once again please ensure not to twist or bend the tubing.



- e) Place the spare travel or filler plug in the printer lid sensor button. This will keep the switch permanently activated as your printer lid will no longer close enough to activate this switch.



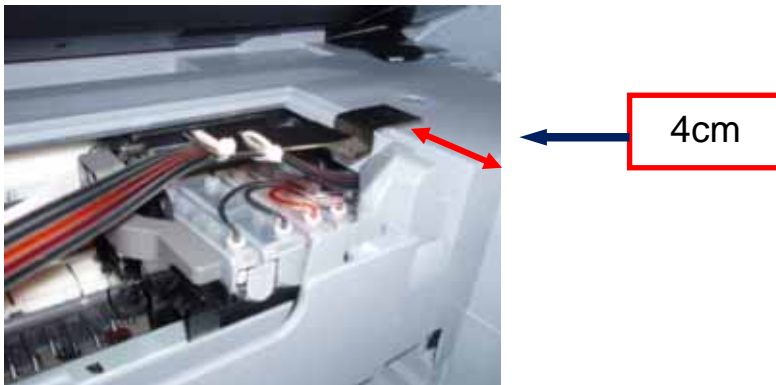
Please refer to section 11) Finishing Touches on 22 to complete the installation process

8) Tube set up (MP800 and MP830 only)

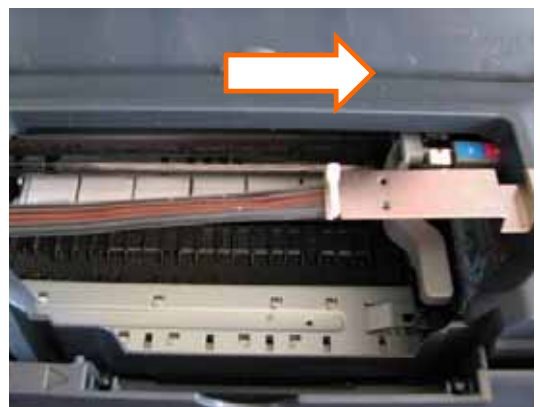
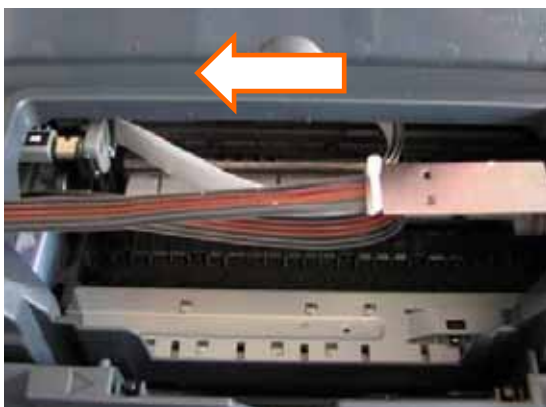
- a) Using a Phillips head screwdriver, remove the plastic cartridge bay sealing cover from the scanner lid. Store this cover away with your printer manuals etc, in the event you need to re-attach it for printer warranty return issues.



- b) Remove the backing to the double sided tape and attach the metal tube support arm approximately 4cm from the front as pictured below.

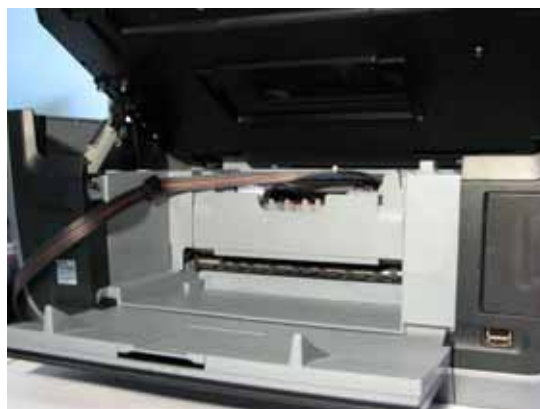


- c) Adjustments to the tube length may be required. To check this, move the cartridge holder left and right to each end of the printer. It should reach both ends with ease. Check that the tubing is neither too long nor too short. The tubing must not interfere with the printer data wire nor should it fall down into the paper support or cause any interference to the head movement.



- d) If required, adjust the tube length by gently pulling the silicone tubing in the direction required. ***DON'T HAVE THE TUBING FITTED TOO TIGHTLY.***

e) Run the tubing as per the following exiting through the front of the printer.



Please refer to section 11) Finishing Touches on 22 to complete the installation process.

9) Tube set up (MP500 ONLY)

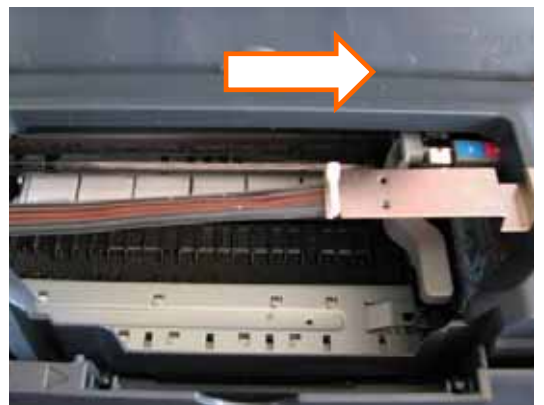
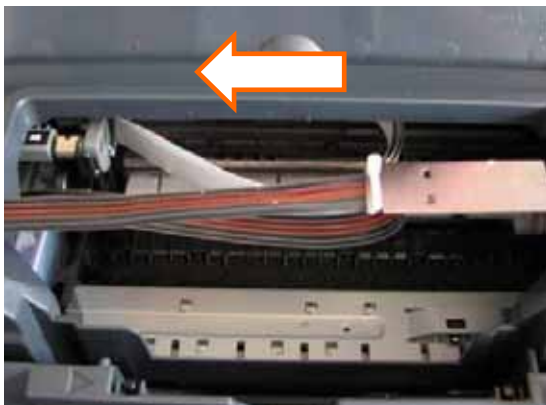
- a) Attach the two black clips as pictured below. The clips have a piece of double sided tape attached, simply remove the backing and attach. This will prevent the scanner lid from crushing the silicone tubing.



- b) Run the tubing as per the following photographs



- c) Adjustments to the tube length may be required. To check this, move the cartridge holder left and right to each end of the printer. It should reach both ends with ease. Check that the tubing is neither too long nor too short. The tubing must not interfere with the printer data wire nor should it fall down into the paper support or cause any interference to the head movement.



- d) If required, adjust the tube length by gently pulling the silicone tubing in the direction required. ***DON'T HAVE THE TUBING FITTED TOO TIGHTLY.***

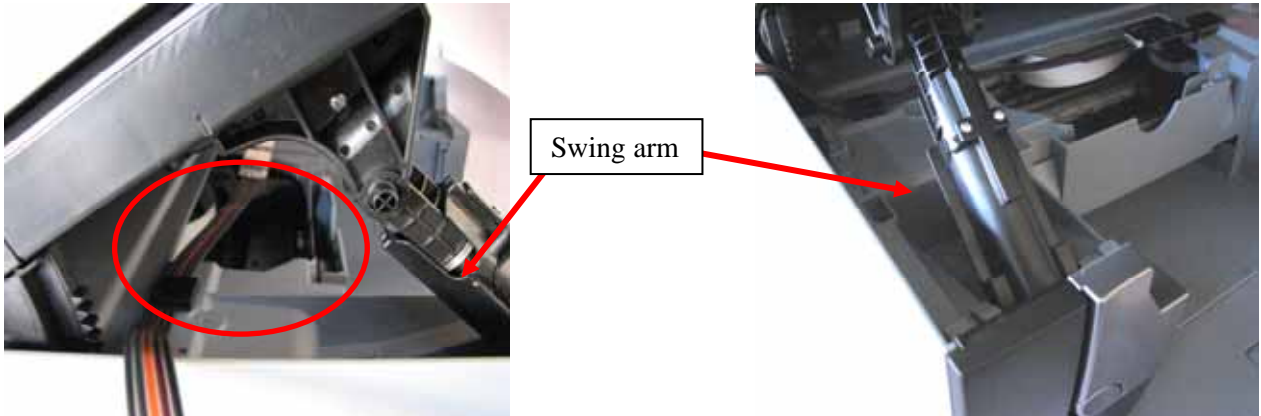
- e) Close the scanner lid and check that the ink flow will not be restricted by the lid. Please note after the installation of the CISS the printer may not registered that the lid is closed. If this occurs please place some tape across the trigger to keep it activated.



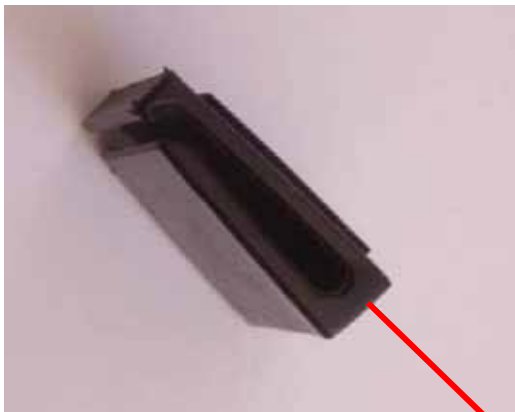
Please refer to section 11) Finishing Touches on 22 to complete the installation process

10) Tube set up (MP530 only)

- a) Feed the cartridges into the printer through the scanner lid swing arm (as depicted below) and click the cartridges in place as per the IP4200 Manual section 6 'inserting the cartridges'.



- b) Attach a raiser clip to the printer (using double sided tape) as show in the following photographs. The metal tube arm is then attached to the clip also using the double sided tape. The design of the MP530 does not allow you to fit the metal tube arm to the printer body without using the raiser clip. The positioning of the metal tubing holder is very important as if it is not in the correct spot the lid of the scanner will not close.



The raiser clip is angled to compensate for the downward angle of the printer moulding

Ensure when attaching the raiser clip that it is attached so that when the metal tube arm is fitted it lays flat and not on an angle.



c) Attach tubing holder clip at the following point



d) Attach the large raiser clips to the left and right side of the printer case. This allows the scanner lid to close without crushing the feeder tubes.



Left Side

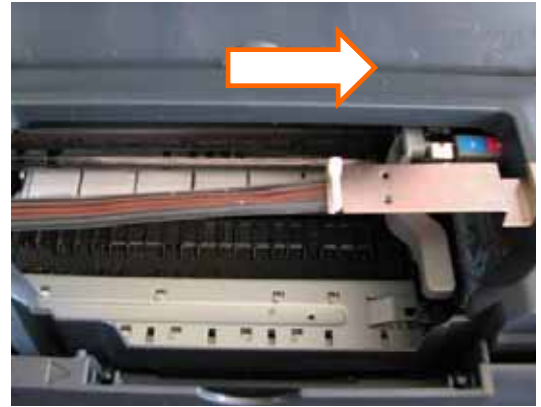
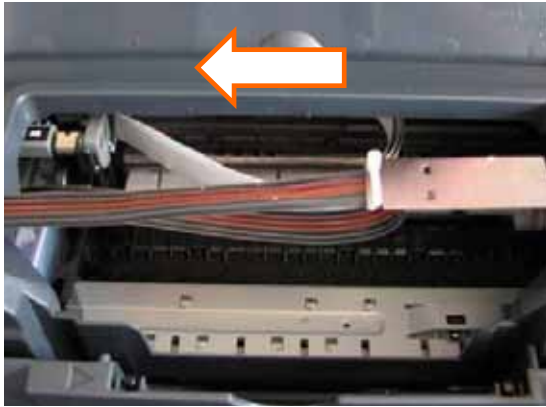


Right side

e) The scanner lid has moulded plastic parts which should fit into the recess of the metal tubing rod. If it does not, move the metal tube arm to a position where the plastic fits into the recess when the lid is closed.



- f) Adjustments to the tube length may be required. To check this, move the cartridge holder left and right to each end of the printer. It should reach both ends with ease. Check that the tubing is neither too long nor too short. The tubing must not interfere with the printer data wire nor should it fall down into the paper support or cause any interference to the head movement.



- g) If required, adjust the tube length by gently pulling the silicone tubing in the direction required. ***DON'T HAVE THE TUBING FITTED TOO TIGHTLY.***
- h) As the scanner lid is being held ajar by an extra centimetre it may be necessary to activate the lid sensor switch. Cut a small piece of Styrofoam (around 1cm²) from the CISS packaging. Use the foam to push down and activate the lid sensor located at the right hand corner of the printer as pictured below.



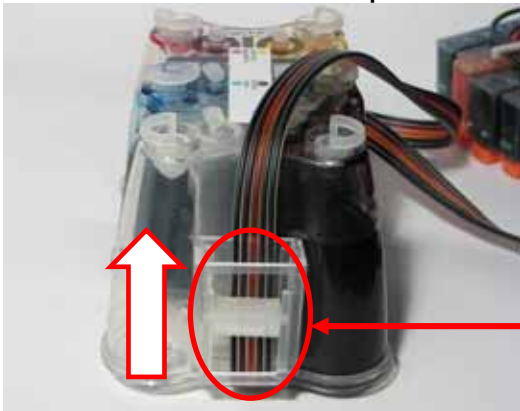
Please refer to section 11) Finishing Touches on 22 to complete the installation process

11) Final touches (all models)

- a) Place the CISS unit on the left hand side of your printer and Insert all the air filters into the top of each air balance chamber. The larger end should be inserted into the air balance chamber.



- b) Release the tube clamp on the front of the CISS by rolling it up.



Release the tube clamp by rolling the roller up.

- c) Reinsert power cable to the rear of your printer. Perform a head clean and nozzle check as per steps 1)a) & 1)b). Please note that this may need to be performed several times to ensure excess air is removed.

CAUTION - NEVER HAVE THE INK RESERVOIRS HIGHER OR LOWER THAN THE PRINTER HEIGHT. THIS WILL EFFECT THE INK FLOW TO YOUR PRINTER, AND CAUSE YOUR PRINTER TO FLOOD WITH INK

12) Refilling your CISS

- a) Do not allow the ink levels to fall below the refill line. To refill each ink simply **remove the air filters and replace the travel plugs** (to prevent the air balance chambers filling with ink) for the colour in which you are refilling.



- b) Remove the filler plug and carefully pour or syringe the correct coloured ink into the appropriate ink reservoir. Please ensure to double check the colour with the sticker located on the bottle and the top of the tank.



- c) Replace the filler plug once filled. Remove the small travel plug replacing it with the air filter.

DO NOT REFILL YOUR SYSTEM WITH CHEAP QUALITY IMPORT INKS!

Quality refill inks can be purchased directly from Rihac
at 157 Union Road, Ascot Vale, Vic 3032 Phone 03 9005 5555 or online at
www.rihac.com.au

Caution

To ensure ink does not fill the air chamber when refilling your unit, it is imperative that the air filter is replaced with the travel plug. Do not have both the travel plug and refill plug removed at the same time.

13) Priming

- a) Only prime your CISS if excess air (5cm or more) is present in the tubing. **It is recommended that priming is conducted in a suitable workspace. Please ensure to wear gloves & have some tissues handy to soak up excess ink before undertaking any priming.**
- b) Remove the CISS from the box and place it on a suitable work area with the cartridges upside down. Remove the cover from the cartridge you are priming by twisting it anticlockwise.



- c) **Release the roller clamp by rolling it up – This step is very important!**



Release the tube clamp by rolling up the roller down

- d) Remove the travel plug from the corresponding cartridge ink chamber.



Travel plug (air chamber)

- e) Draw air into the syringe (DO NOT ATTACH A NEEDLE) then place it in the hole left by the removed travel plug.



- f) Push down **very slowly** on the syringe, pushing air into the reservoir.

*It is **very important** that you push down very slowly (use the gauge on the side of the syringe and do not push down more than 1ml at a time). The ink reservoir becomes pressurized as you push air into it. Forcing too much air in too quickly can result in ink squirting back up and out the air balance tube at force if the syringe is removed without drawing back on it a little.*

As you gently push down on the syringe, ink will feed through the tubing forcing excess air through the silicone tubing and into the cartridge. As you do this you will notice the cartridge filling with ink.



cartridge has too much air



ink level rises

Once the cartridge is near full slowly draw back 1 cm on the syringe
Carefully remove the syringe from the reservoir to prevent ink back flowing up the air balance tube due to a build up of pressure.

BEWARE

Ink & air bubbles will come out of the sponge. Use a tissue to absorb any ink.

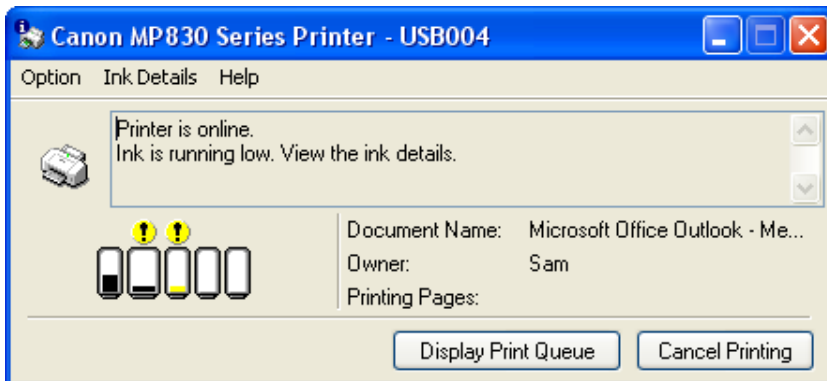
- g) Replace the air filter or travel plug. Re-attach the cartridge cover until you have finished priming to prevent accidental ink spills.

Repeat steps 13)d) – e) for all colours requiring priming.

14) Cartridge chip disable - Low ink.

a) Flashing printer cartridges

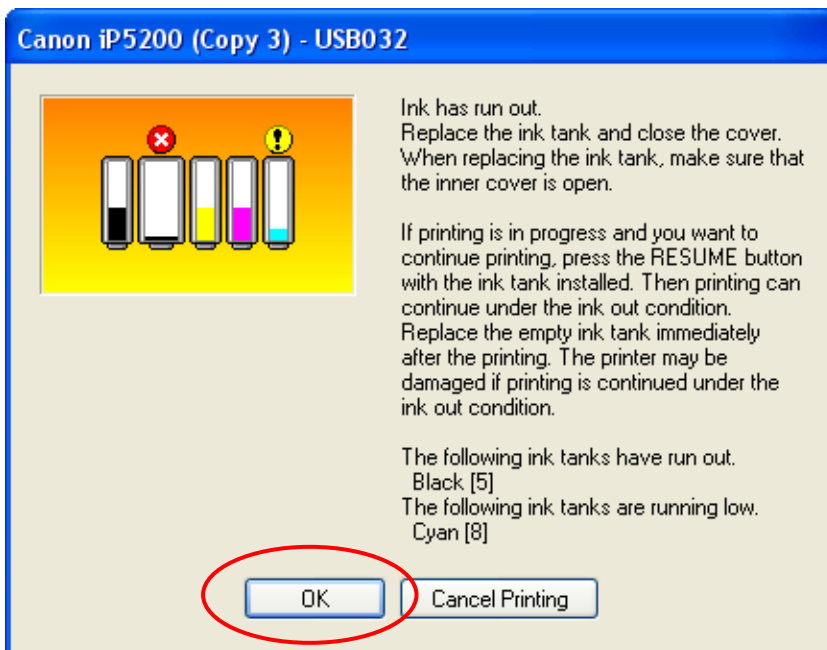
Your canon cartridges will flash when the chip thinks that ink is running low. You will find that the following message will appear when printing. Please continue to print as normal when this message appears.



b) Canon messages – Turning off the printer status monitor

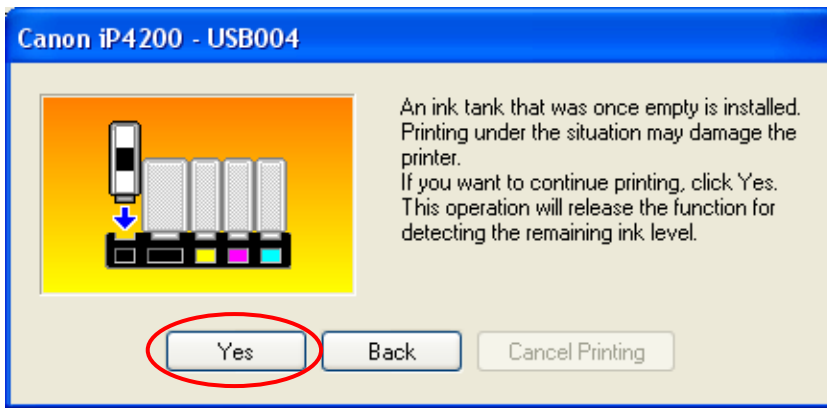
Your printer will proceed through a series of steps informing you that your ink cartridges need replacing. Please follow the steps as displayed carefully. Note these steps will need to be performed once for each individual cartridge. Once all cartridges have proceeded through these steps, your printer status monitor will be turned off and these messages will no longer appear.

Warning Message #1



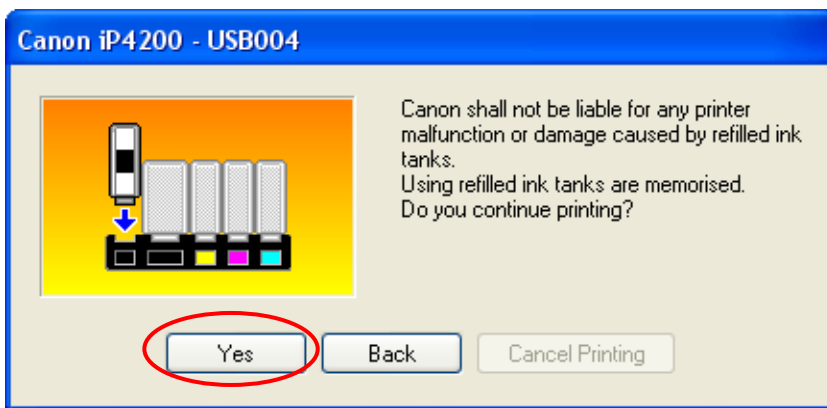
You do not need to remove or replace the cartridge when this message appears. Simply press the printer resume button (or 'OK' button for the MP series printers) followed by OK button on the pop up screen.

Warning message #2



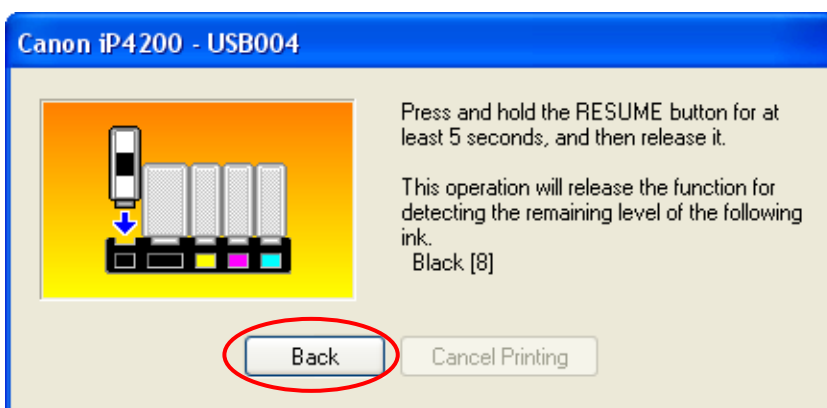
Press Yes to continue.

Warning Message #3



Press Yes to continue.

Warning Message #4



Press and hold the resume/paper feed button (or the stop/reset button for the MP series printers) for 5 seconds then release it. This will disable your printer's capability of reading ink levels for the individual cartridge. This is not a permanent feature and should you return to using genuine cartridges the ink monitoring will return when new cartridges are installed.

Please remember that this procedure will need to be carried out once for each of the cartridges.

15) Trouble Shooting

**Please contact rihac™ on (+61)3 9005 5555 If any of the following trouble shooting suggestions do not fix your problems.
DO NOT CONTACT THE PLACE OF PURCHASE**

a) Leaking Ink

If your CISS appears to be leaking from the cartridges, please ensure that you do not have the ink reservoirs placed higher than the printer level. The CISS works on a vacuum and if raised gravity *will* take over and flood your printer. Ensure that you installed the silicone seals as section 5) of this manual. Failure to install the seals can result in ink seepage.

b) Poor Print Quality

i) Bad print nozzle check.

If you are having problems when performing nozzle checks please ensure that the small silicone seals have not moved out of place when inserting the cartridges. They must not be interfering with the print head.

Not enough ink!

ii) If you are finding that colours seem to be missing or are printing poorly please ensure that you have placed the air valves into the travel plug holes as per section 11)a). If you have done this please check that the roller clamp on the back of your CISS is released (ie rolled to the top) as per section 11)a).

iii) If your unit has excess air in the silicone tubing please perform a deep head clean **followed by a nozzle check**. If this does not remove the air from the tubing please refer to the priming instructions on page 24.

Too much ink!

iv) Please ensure that you do not have your ink reservoir placed higher than the printer level. The CISS works on a vacuum and if raised higher than the printer head, gravity *will* take over and flood your printer

v) Check your printer settings to ensure you have the correct setting for the paper you are using. If you choose photo paper when using plain paper or vice versa the print will be affected as these settings determine the amount of ink dispersed onto the paper.

c) Abnormal Grinding Noises.

If your printer is making abnormal sounds or the printer head seems to be struggling to move from one end to the other please readjust the metal bracket which is holding the silicone tubing and check the length of the tubing as per page 13).

d) **Ink Tank Error.**

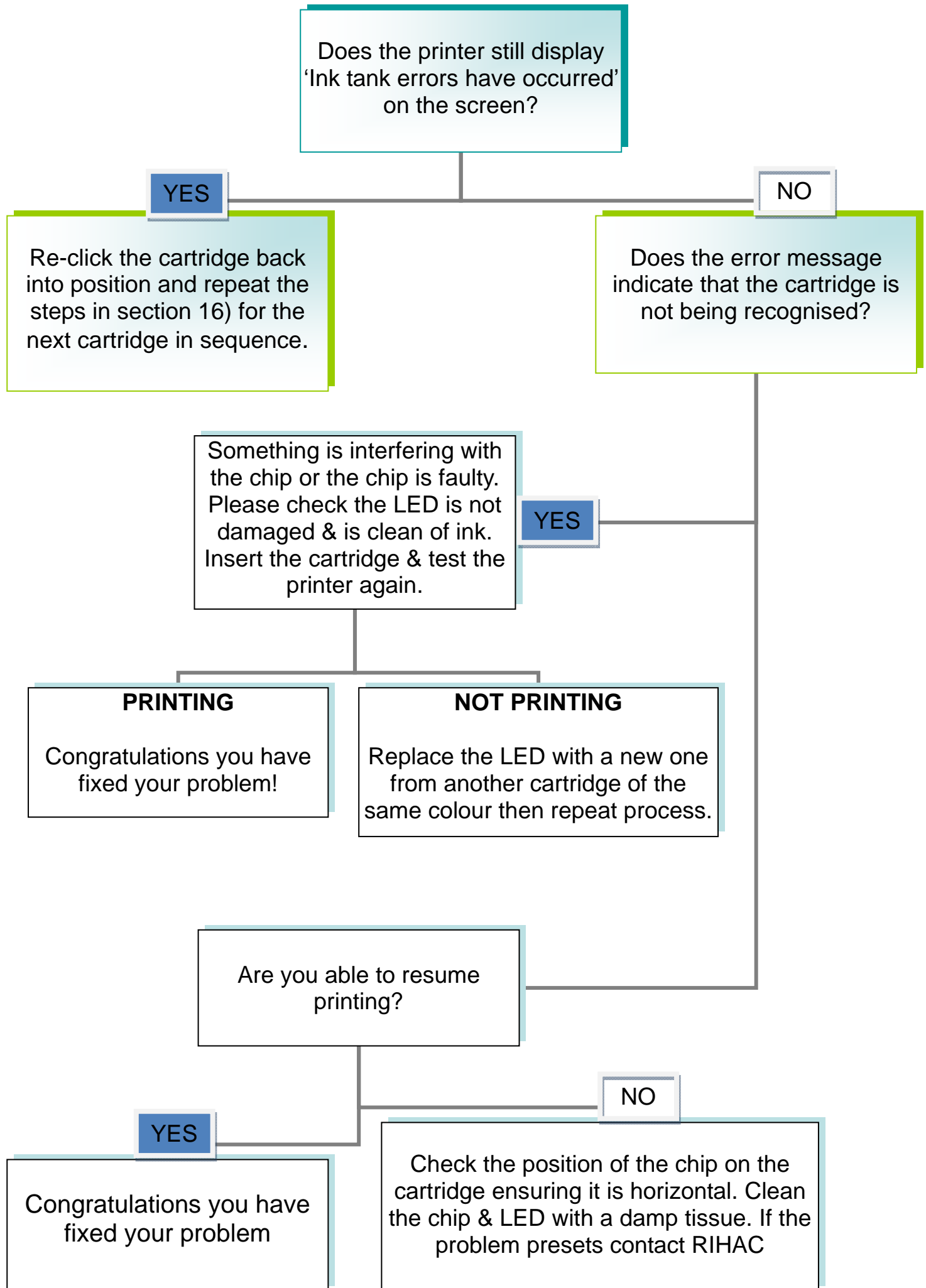
If your printer is stating that an ink tank error has occurred please check the following if the message does not identify the problem cartridge ;

- i) Check the ink feed tubing is neither too tight nor too loose as per page 13.
- ii) Unclick and re-click all cartridges whilst in the cartridge change position. This will temporarily activate all the LED lights on the cartridges. Any cartridge LED which does not activate (either flash or remain constant) is either physically damaged or attached incorrectly.

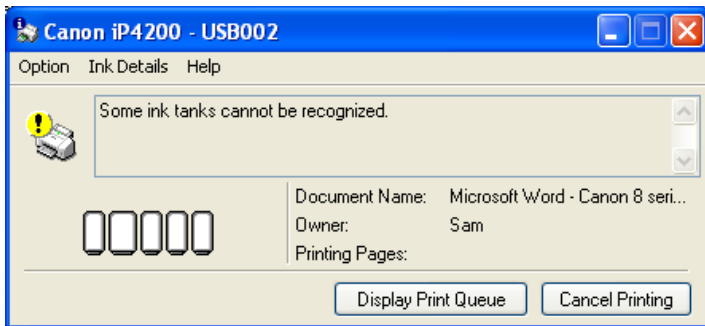
If the above does not assist you please make your way through the following trouble shooting chart.

16) Trouble Shooting Chart

- i) Open the printer cover and remove the plug holding down the printer lid sensor button. This will allow the cartridges to move to the cartridge change position.
- ii) Unclick only the 8bk cartridge so that the chip is no longer contacting the chip reader however is still seated in the cartridge bay.
- iii) Re insert the printer lid sensor plug and close the printer lid. An error message will pop up on the screen. Follow the chart to diagnose the error.



17) Canon Error Messages



When your printer turns on it performs a check of the LED lights emitting from the cartridge chips. This is done when the cartridges are at the left most position. The LED light shines through the clear plastic of the cartridge to the sensor. If the sensors cannot detect the light the printer will produce an error message similar to the one pictured above. If this happens check the cartridges to make sure nothing physical impacting on the LED. The most common explanation is a missing LED, accidentally cut off when removing the chips from the OEM cartridges



If one or more of your ink cartridges cannot be recognised, please ensure that the cartridges are clicked into position and/or the chips are correctly placed on the cartridges.

The most common cause of this issue is the blockage or damage of the LED as per page 9.

Ensure the printer lid is closed when checking cartridge recognition. Ambient light in some situations can affect the LED sensors. Failure to close the lid while testing can result in cartridge recognition error messages.

To check that the LED's have not been damaged, bring the cartridges to the change position. Once in position unclick and re-click into position all the cartridges. If the LED light of a cartridge is not functioning (flashing or constant) it is most likely that the chip is faulty or damaged. In this case the chip may need to be replaced.

In unusual cases this message may appear if the chips have been mixed up and fitted to the incorrect CISS cartridge. (i.e. Yellow OEM cartridge chip on a Blue CISS cartridge). The solution in this case is to remove all chips and re-attach to OEM cartridges to identify which chip belongs to each coloured cartridge

Ensure that the printer sensor has been pushed down and secured using a piece of blu-tack or tape as per section



Service error 5100 will occur if you have the silicone tubing fitted too tightly on your printer. Please check the tubing by follow steps 7)b) on page 13 again carefully. You will then need to turn off and on your printer at the power button.

Service error 6502 generally means that your cartridge chips cannot be recognised. The primary causes of this error message are:

- 1- Covering of the LED light at the back of the chip
- 2- Incorrect chip positioning on the cartridge. Again Ensure that no tape, glue etc is covering or impeding LED on the rear of the chips.
- 3- The lid of the printer is open whilst testing – This will cause the ambient light to interfere with the LED lights which are checked as the print head moves from left to right.
- 4- The LED on one or more of the cartridges has been damaged when removing it from the original cartridge
- 5- The chips have been mixed up and fitted to the incorrect CISS cartridge. (i.e. Yellow OEM cartridge chip on a Blue CISS cartridge). These chips are colour specific and need to be fitted to the corresponding coloured CISS cartridge
- 6- Ink is covering the cartridge chip or a sensitive area of the cartridge and preventing the LED light sensor from functioning

18) Warranty

Please note that your CISS has a manufactures warranty of 3 months from date of purchase. Your warranty will be void if the system is incorrectly handled. This warranty does not cover printer hardware. Please ensure to retain your purchase receipt along with a copy of your nozzle check to assist with processing your claim

19) Warning



- Keep out of reach of children



- Do not drink ink



- Avoid ink contact with eyes



- Store between 15-35°C

- Do not store in direct sunlight

- Once your CISS is installed
NEVER raise it above your printer.

* Please note that our inks are completely compatible with your Canon printer but are not manufactured by Canon.

Copyright 2007 rihactm. All rights reserved all brand names, trademarks and photos are property of their respective holders and are used for reference only.



more colour, better choices

- **CIS Systems**
- **High Grade UV Dye Inks**
- **Pigment Inks**
- **Blank Media**

157 Union Road,
Ascot Vale, Vic 3032

Web: www.rihac.com.au
Email: info@rihac.com.au

Ph: (+613) 9005 5555
FAX: (+613) 9326 1655